

**RAILOK™ 90**  
**VERTICAL FALL ARREST RAIL SYSTEM**



### **Safety :**

Safety while ascending and descending ladders remains a key issue in many different market sectors. In addition to providing safety, solutions that address these needs cannot restrict operators from completing their work.



### **Confidence :**

Rather than utilising a webbed shock absorber that will deteriorate over time, the shuttle device employs a revolutionary metallic absorber to significantly reduce the forces on the user to less than loads allowed by governing bodies. A key benefit of this technology is the absence of a limited life span common to other metallic parts. Providing the unit passes inspections, Railok™ 90 devices can be used indefinitely. Additionally, the unique energy absorption properties of the metallic shock absorber restrict normal fall distances, thereby minimising the risks involved. These features provide confidence to the user and security for the client.



### **Ease of use :**

The ability of the shuttle device to run the length of the rail unhindered is essential. Any snagging of the shuttle will make it difficult to move freely on the system and could pose safety issues. Addressing this concern, and a key advantage of the Railok™ 90 system is the smooth operation during ascent and descent provided by the design of the shuttle. While allowing freedom of movement up and down, the shuttle locks instantly on the rail in the event of a fall, minimising fall distances and forces on the user.

### **Integrated Solution :**

In applications requiring the use of a ladder where none is present, an integrated solution is available. Utilising rail machined to accept ladder rungs, the system provides the dual benefit of fall protection while meeting the need to ascend and descend the system. Other solutions require the use of two separate systems – one providing the ability to egress and the second providing fall protection.



### **Options :**

Vertical Fall Arrest systems should not restrict foot space on the ladder rungs nor offer resistance to the user as they climb or descend. Made from high-strength extruded stainless steel or aluminium, the Railok™ 90 vertical rail system is available with a wide range of brackets providing installation options in many different configurations - even with narrow gauge ladders where foot space is restricted. These options make the system suitable for many different applications across all market sectors.



## Main Components

### Ladder Rung Clamp

Aluminium alloy clamp, stainless steel lock nut, galvanised steel structural members, galvanised steel and/or zinc plated steel fastening hardware

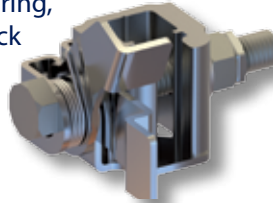
6000120



### Top Gate

Aluminium alloy clamp, stainless steel spring, stainless steel lock nut and galvanised steel fastening hardware

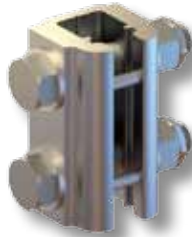
6000353



### Rail Joint

Aluminium alloy, stainless steel lock nut and roll pins, galvanised steel and/or zinc plated steel fastening hardware

6000100



### Standard Rail

Anodised extruded aluminium

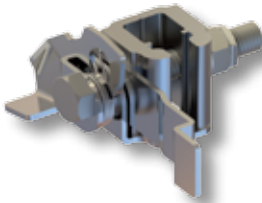
6000031 – 1 metre  
6000033 – 2 metre  
6000035 – 3 metre



### Bottom Gate

Aluminium alloy clamp, stainless steel spring, stainless steel lock nut and galvanised steel fastening hardware

6000355



### Shuttle

Aluminium alloy body, stainless steel rollers and fasteners, bronze bushings, stainless steel spring, hardened stainless steel lock arm, and annealed stainless steel energy absorber

6000377



## Sectors

Requirements for ladder climbing are prevalent in many different sectors and industries. The Railok™ 90 vertical rail system can be used in multiple sectors in many different locations. Virtually any application requiring the ability to egress a vertical system safely and with 100% fall protection is addressed by Railok™ 90.



Construction



Wind Energy



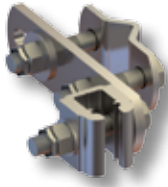
Oil & Gas



Telecommunications

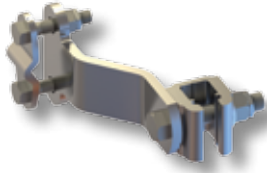
## Other Components Available

**Ladder Stile Clamp**



6000121

**Off-Set Clamp**



6000190: 60mm

**Step Bolt**



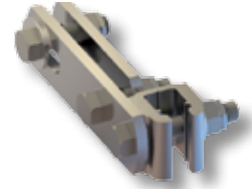
6000298: 239mm

**Rest Platform**



6000299

**Stile & Bar Stock Clamp**



6000140: 84mm

**Structural Iron Clamp**



6000136: 85mm  
6000131: 145mm  
6000130: 150mm

**Angle Iron Clamp**



6000132: 149mm  
6000133: 194mm  
6000134: 244mm  
6000135: 294mm

**Pipe Clamp**



6000122: 60.5mm  
6000123: 76.3mm

**Angle Iron Clamp**



6000180: 60mm  
6000160: 70mm  
6000161: 80mm  
6000162: 90mm  
6000163: 100mm  
6000164: 120mm

**Aluminum Door**



6000357

**Column Clamp**



6000170: 170 - 240mm  
6000171: 240 - 360mm  
6000172: 360 - 500mm  
6000173: 500 - 650mm  
6000174: 650 - 800mm

**Hinged Column Bracket**



6000150: 139.8mm - 143.3mm  
6000151: 165.2 - 190.7mm  
6000152: 216.3 - 267.4mm  
6000153: 318.5 - 355.6mm

**Ladder Rail**



6000301: 600mm  
6000302: 900mm  
6000303: 1200mm  
6000304: 1500mm  
6000305: 1800mm  
6000306: 2100mm  
6000307: 2400mm

### Specifications:

**Capacity:** Up to four users. Minimum and maximum weight based on user's weight + tools + clothing + miscellaneous items in the range of 45 kg to 141 kg. Spacing of single user per 3m of rail. **Shuttle:** Aluminum alloy body, stainless steel rollers and fasteners, bronze bushings, stainless steel spring, hardened stainless steel lock arm, and annealed stainless steel energy absorber. **Rail:** Aluminum alloy with anodised coating. **Rail Joint:** Aluminum alloy joints, stainless steel roll pins, stainless steel lock nut, and galvanised steel fastening hardware. **Rail Clamps:** Aluminum alloy clamps, galvanised steel structural members, stainless steel lock nut, and galvanised steel and/or zinc plated steel fastening hardware. **End Gates:** Aluminum alloy clamps, stainless steel spring, stainless steel lock nut, and galvanised steel fastening hardware. **Step Bolt:** Galvanised steel bolts and fastening hardware. **Anti-Climb Door:** Aluminum door, zinc plated and galvanised steel fasteners, and galvanised steel structural members. **Rest Platform:** Galvanised steel structure, galvanised steel and stainless steel fastening hardware, and stainless steel hinge. **Environmental:** Operational working range: -50°C to +70°C - No ice allowed on shuttle or rails. The Railok™ 90 Vertical Fall Arrest Rail System complies with CE EN353-1, CSA Z259.2.1 and ANSI A14.3